



Shree
Girnar Metal Industries

AN ISO 9001 : 2015 Certified Company

We continuously work on the forefront of
improving quality,
innovation & technology.

Quality Flame free fittings
for **CONNECTING**
AC & REFRIGERANT LINES

Quality Without
Compromise Since 1982



MANUFACTURER & EXPORTER OF
BRASS & COPPER FITTINGS, VALVES, ETC.





growth

"Always one step ahead.
Because fulfilling the present
is never enough."



अयं बन्धुरयंनेति गणना लघुचेतसाम्
उदारचरितानां तु वसुधैव कुटुम्बकम्

Mr. Suresh Jain
Chairman of Shree Girnar Metal Industries

Chairman Message

It gives me an immense pleasure to endorse that **SGMI**, since its inception in 1982 has been the front runner and pioneer in the field of All Brass Flare Fittings, Copper Fittings, Olive Fittings, Compression Fittings, Etc. This long journey would not have been possible without your trustworthy partnership in every aspect.

Due to our "Mantra" of providing our valuable partners with the best quality of products, we have been able to win over your confidence, which is not less than a mine of gold for us.

This journey still have a long way to go, as per relationship grows stronger, we work hard day in and day out, to fulfil your expectations.

To stand high,
be different.

VISION

To achieve complete Satisfaction of customers in products & service hence become a renowned companies in individual field.

MISSION

To provide "Quality Brass Compression Fitting & Copper Fitting Products" to the "World of Manufacturing" for enhancing their operational efficiency.

VALUES

The company also provides clean, congenial and commensurate work environment to its employees thereby keeping the work force motivated and self driven to provide their best to the company and our customers.

Corporate Profile

Shree Girnar Metal Industries

Leading brass & copper fitting products manufacturer in India

Company Brief

Incepted in the year 1982, we are Malerkotla (India) based manufacturers and Exporters of Precision Brass & Copper Components Supplying all over India as well as offshore regions like Middle-East, Asian countries. Our components technologically advanced and have high level of performance that has earned them global recognition

Shree Girnar Metal Industries insists upon unmatched quality and excellent customer services and most competitive prices a tradition of the group and strategy for the future.

To achieve the maximum Standard and Quality, our Quality control team continuously monitors the products and user requirement right from the production stage up to the final dispatch. Due to Strict quality control procedures our customers are ensured that their requirements are met accurately and consistently. Over the years, we gained expertise & we have serviced some of the largest corporations worldwide. Whether a unique item with a onetime requirement or long running contract orders with scheduled deliveries, Shree Girnar Metal Industries is the right source for the job apart from standard products. As a company, we focus on providing quality products, service and value to our customers. We emphasis on increasing our facilities, testing procedures & other resources based on our Customer requirements which add value to our customer friendly policy.

Capabilities

We are a vision driven organization, and the key to fulfilling our vision is to add significant value to the customer. To meet this ambitious vision, we've invested first in our team, assembling an impressive array of experienced talent and provided them with state of the art technologies and equipment. We strive to provide high value-added, high quality, single-source fabrication for the air transportation, food service, and non-structural, non-ferrous architectural metal industries with short lead times.

Our Team

Our team in the organization forms pillar of our success. Our team works in close collaboration with our clients to present their innovative thinking in true shape. We provide customization on our range of precision turned brass components as per the specifications of our clients.

- Technicians
- Mechanical Engineers
- Design Engineers
- Quality Analysts
- R&D Personnel
- Sales and Marketing Representatives

Why Choose Us?

We believe that our historical success and future prospects are directly related to a combination of strengths, including the following:

- Best 'Speed to Market' in Industry
- Cost efficiency
- World class technology
- Global scale of operations
- Product range and expansion lend scalability to operations
- Comprehensive CAD/CAM and product development capability
- High Quality, motivated Human Resources

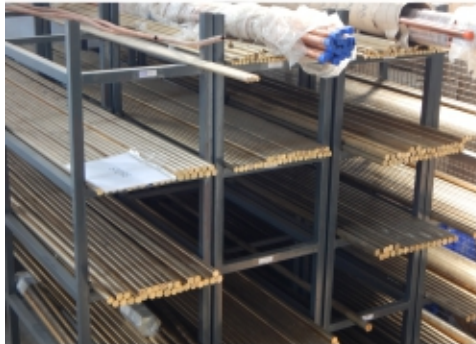


Infrastructure & Facilities

Backed by a state of art infrastructure complete with all the latest production facilities and sophisticated equipment we are able to manufacture products matching up to the international standards. Our infrastructure enables us to carry all the operations smoothly and provide complete satisfaction to our clients.

- Matchless Range of Brass Products
- Advanced Infrastructural Unit
- Modern Testing Facilities
- Competitive Pricing Policy
- Timely Delivery Services

We fabricate our exquisite varieties of products from manual, semi-automatic, and automatic turning machines which have an accuracy of $\pm 0.05\text{mm}$ tolerance.



We
Build
our
reputation
ON
QUALITY



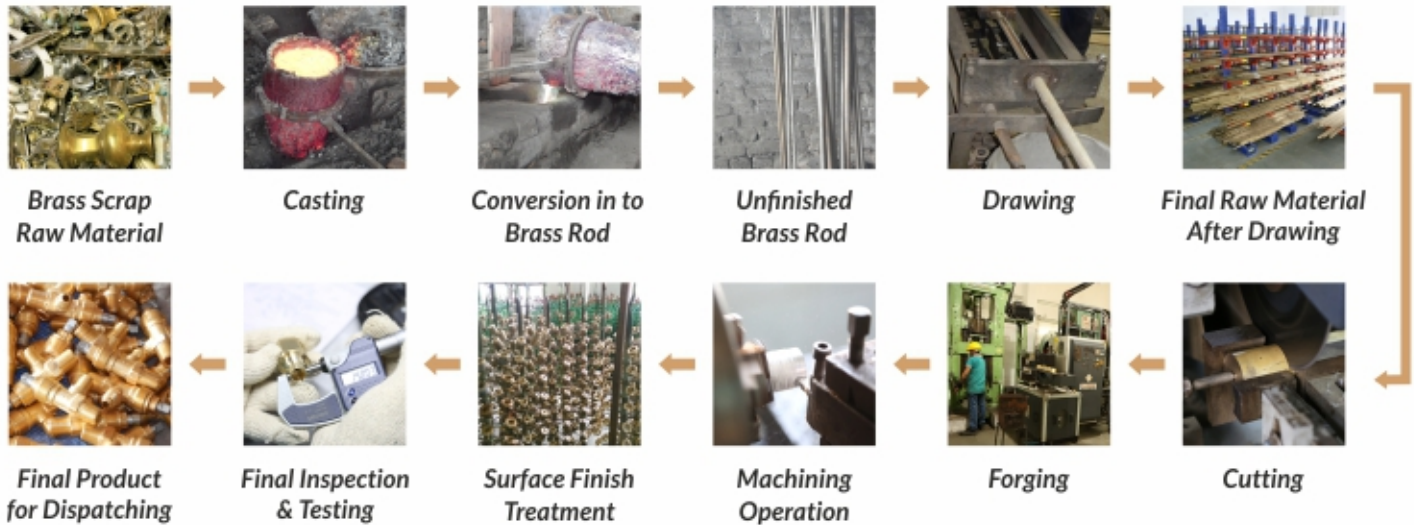
In House Facilities

Manufactured objects can be supplied after undergoing machining operations, Single spindle automatic bar turning machines, lathes, and second operation like milling, drilling & threading. Galvanized or coated surface treatments are also available. Instruments like Profile Projector with Geometry DRO, Digital Vernier Caliper, Screw Gauge Micrometer, Inner Groove Measuring Instruments and all types of Ring and plug Gauges according to international thread forms are available.

Operating to high-quality standards in both specialist and general engineering sectors, we offer the complete manufacture of your components. Supplying both large and small batch sizes to a wide range of companies and industrial sectors from a variety of materials from Brass/Copper to various grades Ferrous metal. Produced accurately, on time and competitively priced. We manufacture components with flats, hexagons, cross holes slots and internal threads in a single operation giving a better quality product and substantial cost reductions. We have the capability to provide solutions for all your product requirements.



Manufacturing Process



Quality Policy

We have well-trained & skilled staff in each and every department. Our goods are manufactured under the strict Quality Check supervision team at every step of production. We deliver Quality product, unbeatable service, accurate advice and timely delivery of products.

Our target is to reduce variability to achieve zero defects for our products and services while improving cycle times. Each defect must be eliminated by systematic corrective and preventative measures. And currently maintaining 97 % on-time delivery of goods to our customer to provide with highest level of service satisfaction, which is quite remarkable as compared to our competitor.

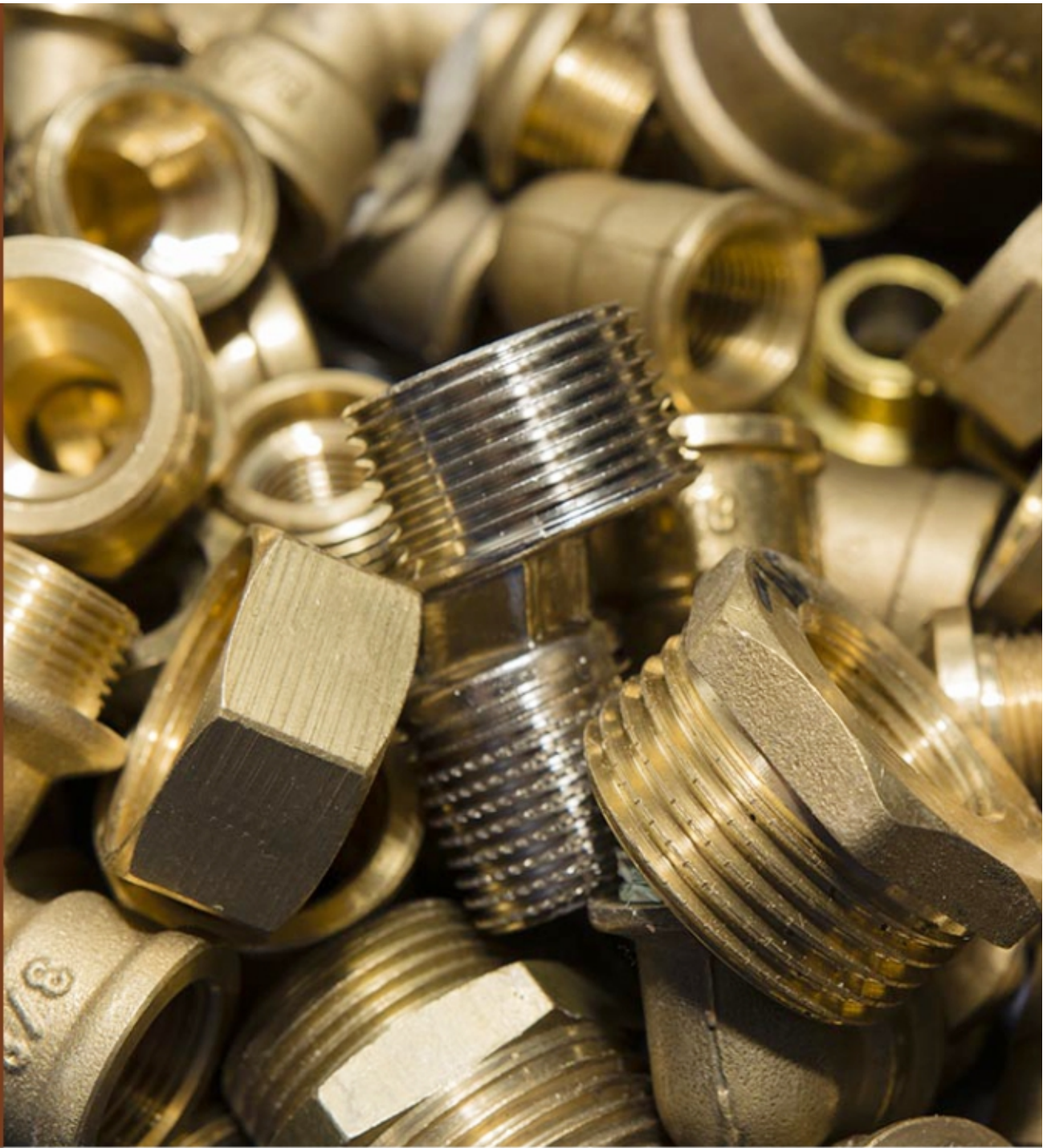
Customer satisfaction is a key to success for every business and we believe customers' satisfaction comes from dedicated and intelligent efforts of each & every Employee of our organization accompanied with Safe, Comfortable and Pleasant working Environment. Training at regular interval is provided for sharing personal skill & build deeper knowledge.

As the Instruments are the heartbeats of Quality products, to assure good quality and competent Instruments are required. Company has invested good amount behind this to have majority type of Inspection instruments including all general purpose in instruments, gauges and other sensitive instruments.

Some of our Quality Control measurements are:
 Height Master, Profile Projector, Digital Roughness Tester, Air Pressure Gauge Unit, Surface Plate, Height Gauge, Dial Bore Gauge Box.



BASS FITTINGS



Professional Brass Fittings Manufacturers

With our 100% in-house testing facility and stringent compliance to quality at every step, we ensure all our products are of world class standards.



**ANGLE VALVE
(WITH S.S. ROD)**



ITEM NO.	SIZE SIDE FLARE	BOTTOM N.P.T.	PRICE
GM-01	1/4"	1/4"	180-00
GM-02	1/4"	3/8"	250-00
GM-03	3/8"	1/4"	250-00
GM-04	3/8"	3/8"	250-00
GM-05	3/8"	1/2"	458-00
GM-06	1/2"	3/8"	458-00
GM-07	1/2"	1/2"	458-00
GM-08	5/8"	1/2"	475-00
GM-09	5/8"	5/8"	550-00
GM-10	1/4"	1/4"FL	180-00
GM-11	3/8"	3/8"FL	250-00
GM-12	1/2"	5/8"	550-00
GM-13	1/4"	1/8"	190-00

**EXPENSION VALVE
(ICE CANDY)**



With Plastic Wheel

ITEM NO.	SIZE SIDE FLARE	PRICE
GM-14	5/8" FL X 3/8" FL	550-00
GM-15	1/2" FL X 3/8" FL	550-00

**SINGLE PORT COMPRESSOR
VALVE (FRICK)**



ITEM NO.	SIZE SIDE FLARE	BOLT CENTRE	FLANGE THICKNESS	GAUGE CONNECTION	PRICE
GM-16	3/8"	23/16"	1"	1/8"	590-00
GM-17	1/2"	23/16"	1"	1/8"	590-00
GM-18	5/8"	23/16"	1"	1/8"	615-00

**COMPRESSOR VALVE
(BITZER)**



ITEM NO.	SIZE SIDE FLARE	BOLT CENTRE	FLANGE THICKNESS	GAUGE CONNECTION	PRICE
GM-19	3/8"	27/16"	15/16"	1/8"	614-00
GM-20	1/2"	27/16"	15/16"	1/8"	614-00
GM-21	5/8"	27/16"	15/16"	1/8"	650-00



Shree
Girnar Metal Industries
AN ISO 9001 : 2015 Certified Company



Brass Fittings

**BHARGOV COMP.
VALVE (3 H.P.)**



ITEM NO.	SIZE SIDE FLARE	BOLT CENTRE	FLANGE THICKNESS	GAUGE CONNECTION	PRICE
GM-22	5/8"	2.21/32	7/8"	1/8"	1635-00
GM-23	3/4"	2.21/32	7/8"	1/8"	1635-00
GM-24	7/8"OD	2.21/32	7/8"	1/8"	1725-00
GM-25	1-1/8"	2.21/32	7/8"	1/8"	1755-00

**AMOKING COMP.
VALVE (3 H.P.)**



ITEM NO.	SIZE SIDE FLARE	BOLT CENTRE	FLANGE THICKNESS	GAUGE CONNECTION	PRICE
GM-26	5/8" FL	2.3/4"	7/8"	1/8"	1638-00
GM-27	3/4" FL	2.3/4"	7/8"	1/8"	1665-00
GM-28	7/8"OD	2.3/4"	7/8"	1/8"	1740-00
GM-29	1-1/8" OD	2.3/4"	7/8"	1/8"	1755-00

**FREEZE KING COMP.
VALVE (F.K. 50) 1 HP**



ITEM NO.	SIZE SIDE FLARE	BOLT CENTRE	FLANGE THICKNESS	GAUGE CONNECTION	PRICE
GM-30	1/4"	1.5/8"	5/8"	1/8"	563-00
GM-31	3/8"	1.5/8"	5/8"	1/8"	563-00
GM-32	1/2"	1.5/8"	5/8"	1/8"	570-00
GM-33	5/8"	1.5/8"	5/8"	1/8"	600-00

**FLANGE TYPE COMP.
VALVE (R.A.) FK 750**



ITEM NO.	SIZE SIDE FLARE	BOLT CENTRE	FLANGE THICKNESS	GAUGE CONNECTION	PRICE
GM-34	1-1/8" OD	2.3/4"	1.1/8"	1/8"	2313-00
GM-35	1-3/8" OD	2.3/4"	1.1/8"	1/8"	2400-00



**SOLDER TYPE COMP.
VALVE (V.F.T.) FK 450**



ITEM NO.	SIZE SIDE FLARE	BOLT CENTRE	FLANGE THICKNESS	GAUGE CONNECTION	PRICE
GM-36	5/8" FL	1.5/8"	1.1/4"	1/8"	1375-00
GM-37	7/8" OD	1.5/8"	1.1/4"	1/8"	1375-00
GM-38	1.1/8" OD	1.5/8"	1.1/4"	1/8"	1438-00
GM-39	1.1/8"OD(H)	1.5/8"	1.3/8"	1/8"	1625-00

**CARRIER COMP. VALVE
(4 BOLT) (WITH METAL CAP)**



ITEM NO.	SIZE	PRICE
GM-40	1.5/8"	3750-00
GM-41	1.3/8"	3750-00
GM-42	1.1/8"	3750-00
GM-43	7/8"	3750-00

**CARRIER COMP. VALVE
(4 BOLT) (WITH METAL CAP)**



ITEM NO.	IN LET SIDE	OUT LET BOTTOM	GAUGE CONNECTION	PRICE
GM-44	1/4"FL X	1/4"NPT	1/8"	570-00
GM-45	1/4"NPT X	1/4"FL	1/8"	570-00
GM-46	3/8"FL X	1/4"NPT	1/8"	585-00
GM-47	3/8"FL X	3/8"NPT	1/8"	585-00
GM-48	3/8"NPT X	1/4"FL	1/8"	585-00
GM-49	3/8"NPT X	3/8"FL	1/8"	585-00

**TWO WAY SHUT OFF VALVE
(STEP DOWN) (C-39)**



ITEM NO.	IN LET SIDE	OUT LET BOTTOM	PRICE
GM-50	1/4"FL X	1/4"FL	555-00
GM-51	3/8"FL X	3/8"FL	588-00
GM-52	1/2"FL X	1/2"FL	613-00

DOUBLE GAUGE MANIFOLD



ITEM NO.	DESCRIPTION	PRICE
GM-53	GM-56 'GM' Gauge Manifold is fitted with two hand wheels on both ends and 1/8" FPT gauge connection on top which enables service-man to quickly install pressure gauges to diagnose trouble and facilities charging, purging, adding oil etc.	550-00



**HAND SHUT OFF VALVE
(TWO WAY) HEAVY**



With Plastic Wheel

ITEM NO.	SIZE FLARE	PRICE
GM-54	1/4" FL X 1/4" FL	290-00
GM-55	3/8" FL X 3/8" FL	375-00
GM-56	1/2" FL X 1/2" FL	790-00
GM-57	5/8" FL X 5/8" FL	814-00
GM-58	----- X -----	250-00

**HAND SHUT OFF VALVE
(THREE WAY) HEAVY**



With Plastic Wheel

ITEM NO.	SIZE FLARE	PRICE
GM-59	1/4" FL X 1/4" FL X 1/4" FL	490-00
GM-60	3/8" FL X 3/8" FL X 3/8" FL	532-00

**SINGLE PORT
LIQUID INDICATOR**



With Plastic Dust Cover

ITEM NO.	SIZE	PRICE
GM-61	1/4"FL X 1/4"FL	470-00
GM-62	3/8"FL X 3/8"FL	494-00
GM-63	1/2"FL X 1/2"FL	534-00
GM-64	5/8"FL X 5/8"FL	550-00
GM-65	7/8"OD X 7/8"OD	1212-00
GM-66	1.1/8"OD X 1.1/8"OD	1280-00
GM-67	1.3/8"OD X 1.3/8"OD	1694-00
GM-68	1.5/8"OD X 1.5/8"OD	1766-00

**SINGLE PORT
LIQUID INDICATOR**



With Plastic Dust Cover

ITEM NO.	SIZE	PSI	PRICE
GM-69	3/8"NPT X 3/8"FL	300	800-00
GM-70	1/2"NPT X 5/8"FL	300	850-00
GM-71	3/8"NPT X 1/2"FL	300	820-00
GM-72	1/2"NPT X 1/2"FL	300	840-00
GM-73	5/8"NPT X 5/8"FL	300	1383-00
GM-74	3/4"NPT X 3/4"FL	300	2080-00
GM-75	1/2"NPT X 1/2"FPT	300	1250-00
GM-76	3/4"NPT X 3/4"FPT	300	2450-00
GM-77	1"NPT X 1"FPT	300	3250-00

Note: Extra Testing charges 350 PSI Rs. 20/-, 400 PSI Rs. 30/- and above Rs. 40/-net.



NEEDLE VALVE (MALE)



ITEM NO.	MPT	SIZE X	MPT	PRICE
GM-69	1/8"MPT	X	1/8"MPT	290-00
GM-70	3/8"MPT	X	3/8"MPT	345-00
GM-71	1/2"MPT	X	1/2"MPT	438-00

NEEDLE VALVE (FEMALE)



ITEM NO.	FPT	SIZE X	FPT	PRICE
GM-72	1/4"FPT	X	1/4"FPT	358-00
GM-73	3/4"FPT	X	3/8"FPT	450-00
GM-74	1/2"FPT	X	1/2"FPT	575-00

GLOVE VALVE (FORGED)



ITEM NO.	SIZE	PRICE
GM-75	1/2" OD	2500-00
GM-76	5/8" OD	2500-00
GM-77	3/4"OD	3125-00
GM-78	7/8" OD	3125-00
GM-79	1.1/8"OD	3125-00
GM-80	1.3/8" OD	6250-00
GM-81	1.5/8" OD	6250-00
GM-82	2.1/8" OD	12500-00
GM-83	2.5/8" OD	25000-00

**SERVICE SPLIT VALVE
(COPPER TUBE)**



ITEM NO.	FLARE	SIZE X	OD	PRICE
GM-84	1/4"FL	X	1/4" OD	600-00
GM-85	3/8"FL	X	3/8" OD	600-00
GM-86	1/2"FL	X	1/2" OD	625-00
GM-87	5/8"FL	X	5/8" OD	650-00

**SERVICE SPLIT VALVE
(COPPER TUBE)**



ITEM NO.	FLARE	SIZE X	FLARE	PRICE
GM-88	1/4"FL	X	1/4"FL	675-00
GM-89	3/8"FL	X	3/8"FL	675-00
GM-90	1/2"FL	X	1/2"FL	690-00
GM-91	5/8"FL	X	5/8"FL	705-00



ANGLE PACKED RECEIVER VALVE (WITH WHEEL)



ITEM NO.	SIDE	SIZE X	BOTTOM	PRICE
GM-92	1/4"FL	X	1/4"NPT	270-00
GM-93	1/4"FL	X	1/4"FL	285-00
GM-94	3/8"FL	X	1/4"NPT	300-00
GM-95	3/8"FL	X	3/8"NPT	300-00
GM-96	1/4"FL	X	3/8"NPT	300-00

CYLINDER VALVE



ITEM NO.	SIDE	SIZE X	BOTTOM	PRICE
GM-97	5/8"BSP	X	3/4" NPT	925-00
GM-98	3/4"BSP	X	3/4"NPT	925-00
GM-99	5/8"FL	X	3/4"NPT	925-00
GM-100	3/4"FL	X	3/4"NPT	925-00

GAS CHARGING VALVE SINGLE GAUGE MANIFOLD



ITEM NO.	SIZE FLARE	PRICE
GM-101	1/4" FL X 1/4" FL X 1/8" FPT	275-00
GM-102	Capilar Valve 1/4" FL	312-00

BALL VALVE SET (FORGED)



ITEM NO.	SIZE	PRICE
GM-103	5/8"FL X 3/4"FPT	1250-00
GM-104	5/8"FL X 1" FPT	1376-00
GM-105	3/4"FL X 3/4" FPT	2000-00
GM-106	3/4"FL X 1" FPT	2450-00

SERVICE SPLIT VALVE (COPPER TUBE)



ITEM NO.	SIZE	PRICE
GM-107	3/4" FL X 3/4" OD	1625-00
GM-108	7/8" OD X 7/8" OD	1750-00
GM-109	1.1/8" OD X 1.1/8" OD	1875-00
GM-110	1.3/8" OD X 1.3/8" OD	2125-00



**QUICK SPLIT LOCK
(FORGED)**



ITEM NO.	FL	SIZE X	OD	PRICE
GM-111	5/8" FL	X	5/8" OD	200-00
GM-112	1/2" FL	X	1/2" OD	180-00
GM-113	3/8" FL	X	3/8" OD	165-00
GM-114	1/4" FL	X	1/4" OD	150-00

**ROTOLOCK COMP.
VALVE (FORGED)**



ITEM NO.	SIZE	THICKNESS	PRICE
GM-115	1/2" OD	7/8"	750-00
GM-116	5/8" OD	7/8"	750-00
GM-117	3/4" OD	1.1/8"	1500-00
GM-118	7/8" OD	1.1/8"	1500-00
GM-119	1.1/8" OD	1.3/8"	2250-00
GM-120	1.3/8" OD	1.3/8"	2250-00
GM-121	1.5/8" OD	1.3/8"	4000-00

BALL VALVE (FORGED)



ITEM NO.	SIZE	PRICE
GM-122	1/4" FL X 1/4" FL	288-00
GM-123	3/8" FL X 3/8" FL	413-00
GM-124	1/2" FL X 1/2" FL	513-00
GM-125	5/8" FL X 5/8" FL	700-00
GM-126	3/4" OD X 3/4" OD	1500-00
GM-127	7/8" OD X 7/8" OD	1875-00
GM-128	1.1/8" OD X 1.1/8" OD	2500-00
GM-129	1.3/8" OD X 1.3/8" OD	2750-00
GM-130	1.5/8" OD X 1.5/8" OD	3125-00

**ANGLE TYPE GLOVE
VALVE (FORGED)**



ITEM NO.	SIZE	PRICE
GM-131	7/8" OD	2650-00
GM-132	1.1/8" OD	2770-00
GM-133	1.3/8" OD	3450-00
GM-134	1.5/8" OD	3650-00



**FLARE NUT FORGED
SHORT TYPE**



ITEM NO.	SIZE FLARE	PRICE
F-01	1/4"	19-00
F-02	5/16"	30-00
F-03	3/8"	40-00
F-04	1/2"	50-00
F-05	5/8"	66-00
F-06	3/4"	118-00
F-07	7/8"	240-00

**FLARE SEAL
PLUG**



ITEM NO.	SIZE FLARE	PRICE
F-30	1/4"	19-00
F-31	5/16"	35-00
F-32	3/8"	50-00
F-33	1/2"	70-00
F-34	5/8"	90-00
F-35	3/4"	156-00

**FLARE NUT FORGED
LONG TYPE**



ITEM NO.	SIZE FLARE	PRICE
F-08	1/4"	38-00
F-09	5/16"	50-00
F-10	3/8"	64-00
F-11	1/2"	84-00
F-12	5/8"	118-00

**HEX PIPE
PLUG**



ITEM NO.	SIZE FLARE	PRICE
F-36	1/8"	24-00
F-37	1/4"	36-00
F-38	3/8"	56-00
F-39	1/2"	96-00
F-40	3/4"	170-00

**REDUCING FLARE
NUT SHORT TYPE**



ITEM NO.	SIZE FLARE	PRICE
F-13	1/4" X 3/16"	26-00
F-14	5/16" X 1/4"	38-00
F-15	3/8" X 1/4"	48-00
F-16	3/8" X 5/16"	48-00
F-17	1/2" X 1/4"	64-00
F-18	1/2" X 3/8"	64-00
F-19	5/8" X 1/4"	84-00
F-20	5/8" X 3/8"	84-00
F-21	5/8" X 1/2"	84-00
F-22	3/4" X 1/2"	136-00
F-23	3/4" X 5/8"	136-00

FLARE UNION



ITEM NO.	SIZE FLARE	PRICE
F-41	1/4"	30-00
F-42	5/16"	44-00
F-43	3/8"	58-00
F-44	1/2"	96-00
F-45	5/8"	130-00
F-46	3/4"	250-00

**FLARE SEAL CAP
FORGED**



ITEM NO.	SIZE FLARE	PRICE
F-24	1/4"	19-00
F-25	5/16"	40-00
F-26	3/8"	50-00
F-27	1/2"	70-00
F-28	5/8"	90-00
F-29	3/4"	144-00

**REDUCING
FLARE UNION**



ITEM NO.	SIZE FLARE	PRICE
F-47	1/4" X 3/16"	42-00
F-48	5/16" X 1/4"	50-00
F-49	3/8" X 1/4"	70-00
F-50	3/8" X 5/16"	74-00
F-51	1/2" X 1/4"	96-00
F-52	1/2" X 3/8"	98-00
F-53	5/8" X 1/4"	138-00
F-54	5/8" X 3/8"	140-00
F-55	5/8" X 1/2"	142-00
F-56	3/4" X 1/2"	258-00
F-57	3/4" X 5/8"	258-00



**FEMALE COUPLING
(GAUGE ADOPTER)**



ITEM NO.	SIZE FLARE X FPT	PRICE
F-58	1/4" X 1/8"	38-00
F-59	1/4" X 1/4"	60-00
F-60	1/4" X 3/8"	90-00
F-61	1/4" X 1/2"	148-00
F-62	3/8" X 1/8"	90-00
F-63	3/8" X 1/4"	90-00
F-64	3/8" X 3/8"	90-00
F-65	3/8" X 1/2"	148-00
F-66	1/2" X 3/8"	148-00
F-67	1/2" X 1/2"	148-00
F-68	5/8" X 3/8"	150-00
F-69	5/8" X 1/2"	150-00

**CYLINDER VALVE
ADOPTER**



ITEM NO.	SIZE BSP X FLARE	PRICE
F-94	3/4" X 1/4"	136-00
F-95	5/8" x 1/4"	113-00
F-96	1/2" x 1/4"	99-00

**CYLINDER
VALVE CAP**



ITEM NO.	SIZE BSP	PRICE
F-97	3/4"	104-00
F-98	5/8"	81-00
F-99	1/2"	74-00

HALF UNION



ITEM NO.	SIZE FLARE X NPT	PRICE
F-70	3/16" X 1/8"	38-00
F-71	1/4" X 1/8"	35-00
F-72	1/4" X 1/4"	55-00
F-73	1/4" X 3/8"	74-00
F-74	1/4" X 1/2"	124-00
F-75	5/16" X 1/8"	60-00
F-76	5/16" X 1/4"	60-00
F-77	5/16" X 3/8"	74-00
F-78	3/8" X 1/8"	74-00
F-79	3/8" X 1/4"	74-00
F-80	3/8" X 3/8"	74-00
F-81	3/8" X 1/2"	124-00
F-82	1/2" X 1/4"	124-00
F-83	1/2" X 3/8"	124-00
F-84	1/2" X 1/2"	124-00
F-85	1/2" X 5/8"	198-00
F-86	5/8" X 1/4"	198-00
F-87	5/8" X 3/8"	198-00
F-88	5/8" X 1/2"	198-00
F-89	5/8" X 5/8"	198-00
F-90	5/8" X 3/4"	216-00
F-91	3/4" X 3/8"	216-00
F-92	3/4" X 1/2"	216-00
F-93	3/4" X 3/4"	258-00

**FITTING
REDUCING
ADOPTER**



ITEM NO.	SIZE FF X FL	PRICE
F-100	1/4" x 1/4"	43-00
F-101	1/4" x 5/16"	69-00
F-102	1/4" x 3/8"	86-00
F-103	1/4" x 1/2"	125-00
F-104	3/8" x 1/4"	86-00
F-105	3/8" x 3/8"	86-00
F-106	3/8" x 1/2"	125-00
F-107	3/8" x 5/8"	152-00
F-108	1/2" x 1/4"	125-00
F-109	1/2" x 3/8"	125-00
F-110	1/2" x 1/2"	125-00
F-111	1/2" x 5/8"	152-00
F-112	1/2" x 3/4"	244-00
F-113	5/8" X 1/4"	152-00
F-114	5/8" x 3/8"	152-00
F-115	5/8" x 1/2"	152-00
F-116	5/8" x 5/8"	152-00
F-117	5/8" x 3/4"	244-00
F-118	3/4" x 5/8"	244-00
F-119	5/16" x 5/16"	70-00
F-120	5/16" x 1/4"	70-00

**FEMALE FLARE
UNION**



ITEM NO.	SIZE BSP	PRICE
F-121	1/4"	60-00
F-122	3/8"	90-00
F-123	1/2"	118-00
F-124	5/8"	153-00



CONDENSER UNION FORGED



WITH COPPER PIPE

ITEM NO.	SIZE FLARE X OD	PRICE
F-125	1/4"FL X 1/4" OD	62-00
F-126	3/8"FL X 3/8" OD	122-00
F-127	1/2"FL X 1/2" OD	192-00
F-128	5/8"FL X 5/8" OD	256-00

CONDENSER UNION FORGED



WITHOUT COPPER PIPE

ITEM NO.	SIZE FLARE X OD	PRICE
F-129	1/4"FL X 1/4" OD	30-00
F-130	3/8"FL X 3/8" OD	58-00
F-131	1/2"FL X 1/2" OD	96-00
F-132	5/8"FL X 5/8" OD	130-00

CHARGING ADOPTER WITH PIN (FORGED)



ITEM NO.	SIZE	PRICE
F-133	1/4"FL X 1/4" FF	76-00

DOUBLE END FLARE ELBOW FORGED



ITEM NO.	SIZE FLARE	PRICE
F-134	1/4"	50-00
F-135	5/16"	63-00
F-136	3/8"	94-00
F-137	1/2"	113-00
F-138	5/8"	168-00
F-139	3/4"	288-00

REDUCING FLARE ELBOW FORGED



ITEM NO.	SIZE FL X FL	PRICE
F-140	5/16" X 1/4"	78-00
F-141	3/8" X 1/4"	104-00
F-142	1/2" X 1/4"	121-00
F-143	1/2" X 3/8"	121-00
F-144	5/8" X 3/8"	161-00
F-145	5/8" X 1/2"	180-00
F-146	3/4" X 1/2"	288-00
F-147	3/4" X 5/8"	288-00

CHARGING UNION WITH PIN FORGED



ITEM NO.	SIZE	PRICE
F-148	1/4"FL X 1/8" NPT	54-00
F-149	1/4"FL X 1/4" NPT	60-00

HALF ELBOW FORGED



ITEM NO.	SIZE FL X NPT	PRICE
F-150	3/16" X 1/8"	61-00
F-151	1/4" X 1/8"	70-00
F-152	1/4" X 1/4"	70-00
F-153	1/4" X 3/8"	108-00
F-154	5/16"X1/8"	72-00
F-155	5/16"X1/4"	72-00
F-156	5/16"X3/8"	108-00
F-157	3/8" X 1/8"	108-00
F-158	3/8" X 1/4"	108-00
F-159	3/8" X 3/8"	108-00
F-160	3/8" X 1/2"	153-00
F-161	1/2" X 1/4"	153-00
F-162	1/2" X 3/8"	153-00
F-163	1/2" X 1/2"	153-00
F-164	1/2" X 5/8"	268-00
F-165	5/8" X 3/8"	268-00
F-166	5/8" X 1/2"	268-00
F-167	5/8" X 3/4"	288-00
F-168	3/4" X 1/2"	288-00
F-169	3/4" X 3/4"	288-00

FEMALE ELBOW FORGED



ITEM NO.	SIZE FLARE X FPT	PRICE
F-170	1/4"X1/8"	81-00
F-171	1/4" X 1/4"	111-00
F-172	1/4" X 3/8"	172-00
F-173	5/16" X 1/8"	124-00
F-174	5/16" X 1/4"	146-00
F-175	3/8" X 1/8"	144-00
F-176	3/8" X 1/4"	150-00
F-177	3/8" X 3/8"	194-00
F-178	1/2" X 3/8"	200-00
F-179	1/2" X 1/2"	324-00
F-180	5/8" X 1/2"	324-00
F-181	3/4" X 1/2"	388-00



FLARE TEE FORGED



ITEM NO.	SIZE FLARE	PRICE
F-182	1/4"	72-00
F-183	5/16"	86-00
F-184	3/8"	114-00
F-185	1/2"	158-00
F-186	5/8"	235-00
F-187	3/4"	432-00

FLARE CROSS



ITEM NO.	SIZE FLARE	PRICE
F-215	1/4"	135-00
F-216	5/16"	150-00
F-217	3/8"	180-00
F-218	1/2"	225-00
F-219	5/8"	300-00

REDUCING FLARE TEE FORGED



ITEM NO.	SIZE FLARE	PRICE
F-188	1/4"X1/4"X3/8"	118-00
F-189	3/8"X3/8"X1/4"	128-00
F-190	3/8"X3/8"X1/2"	172-00
F-191	1/2"X1/2"X1/4"	162-00
F-192	1/2"X1/2"X3/8"	162-00
F-193	1/2"X1/2"X5/8"	242-00
F-194	5/8"X5/8"X3/8"	242-00
F-195	5/8"X5/8"X1/2"	242-00
F-196	5/8"X5/8"X3/4"	432-00
F-197	3/4"X3/4"X5/8"	432-00

CHARGING NIPPLE



ITEM NO.	SIZE	PRICE
F-220	1/4" HEAVY	60-00
F-221	1/4" NORMAL	45-00
F-222	1/4" LIGHT	30-00

'O' RING ADOPTER



ITEM NO.	SIZE	PRICE
F-223	5/16 X 3/8	100-00
F-224	3/8 X 3/8	108-00
F-225	1/2 X 1/2	172-00
F-226	5/8 X 5/8	216-00

HALF UNION



ITEM NO.	SIZE FLARE X NPT	PRICE
F-198	1/2" X 3/4"	216-00
F-199	1/2" X 1"	252-00
F-200	5/8" X 1"	264-00
F-201	3/4" X 1"	276-00

'O' RING FLARE ADOPTER



ITEM NO.	SIZE	PRICE
F-227	3/8 X 5/16	84-00
F-228	1/2 X 1/2	176-00
F-229	5/8 X 5/8	230-00

MALE TEE FORGED



ITEM NO.	SIZE FL X FL X NPT	PRICE
F-202	1/4"X1/4"X1/8"	81-00
F-203	1/4"X1/4"X1/4"	96-00
F-204	1/4"X1/4"X3/8"	128-00
F-205	5/16"X5/16"X1/4"	108-00
F-206	3/8"X3/8"X1/4"	128-00
F-207	3/8"X3/8"X3/8"	162-00
F-208	1/2"X1/2"X1/4"	194-00
F-209	1/2"X1/2"X3/8"	194-00
F-210	1/2"X1/2"X1/2"	242-00
F-211	5/8"X5/8"X3/8"	242-00
F-212	5/8"X5/8"X1/2"	242-00
F-213	3/4"X3/4"X1/2"	432-00
F-214	3/4"X3/4"X5/8"	432-00

BRASS DISTRIBUTORS



ITEM NO.	SIZE	PRICE
F-234	6 Way	
F-235	8 Way	
F-236	10 Way	
F-237	12 Way	

THERMOWELL



ITEM NO.	SIZE	PRICE
F-238		600-00

COPPER FITTINGS

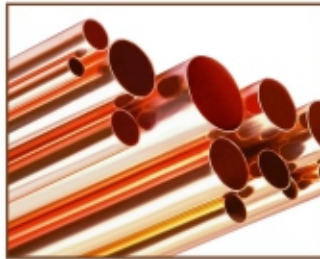


Fast Global Shipping

The benchmarks of Cost Competitiveness, Delivery commitments and Quality that we have set for ourselves have enabled us to serve our customer's requirements through world class quality products and services.



COPPER COILS



STRAIGHT COPPER
TUBES



COPPER CAPILLARY



COPPER
ELBOW 45° (F X C)



COPPER
ELBOW 45° (C X C)



COPPER ELBOW 90°
REDUCING (C X C)



COPPER
ELBOW 90° (C X C)



COPPER COUPLING
(C X C) W/STOP ROLLED



COPPER EQUAL TEE
(C X C X C)



COPPER REDUCERS
(F X C)



COPPER REDUCERS
(C X C)



COPPER UNEQUAL TEE
(C X C X C)



U BEND



COPPER 'Y' PIECE



COPPER END CAPS (C)



CROSSOVER



COPPER TRIPOD



**REDUCING TEE
BRANCH**



**REDUCING TEE
BOTH END**



TUBE END CAP



**REDUCING TEE-ONE
END AND BRANCH**



EQUAL TEE



**REDUCING TEE-
ONE END**



**REDUCING 90°
ELBOW**



STRAIGHT COUPLING



RETURN BENDS



SPECIAL TEE



STORAGE OIL ELBOW



'C' & 'U' BEND



CROSS



FULL CROSS OVER



TUBE STRAPS



**RED DISTRIBUTE
CONNECTOR**



SPECIAL TEE



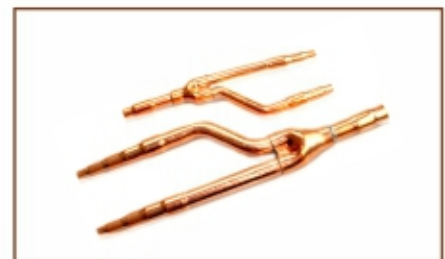
COPPER DISTRIBUTORS



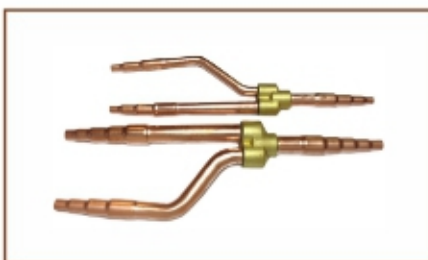
COPPER PIPE ASSEMBLY



COPPER PIPE ASSEMBLY



COPPER PIPE ASSEMBLY



COPPER PIPE ASSEMBLY



STRAINER



COUPLINGS

TERMS OF BUSINESS

1. The Prices cover delivery ex-godown MALERKOTLA.
2. Packing & Forwarding charges being extra.
3. VAT Tax or any others taxes will be extra if applicable.
4. Prices are subject to change without notice and subject to market fluctuation.
5. This Price list does not constitute an offer.
6. Stocks are subject to prior sales and to our final confirmation.
7. It cancels all our previous price lists.
8. Payment strictly through Account Payees Cheque & Draft only.
9. No claim of loss arising from defective material will be entertained.
10. Any types of M.S. Cap charged extra.



Shree
Girnar Metal Industries
AN ISO 9001 : 2015 Certified Company

Product Applications

Following are the product applications where our different kind of products are used in different areas.

**WE ARE CAPABLE TO CATER YOUR DEMANDS OF
BRASS & COPPER FITTINGS, VALVE, ETC.**

Quality
is not Expensive
It's **Priceless!**



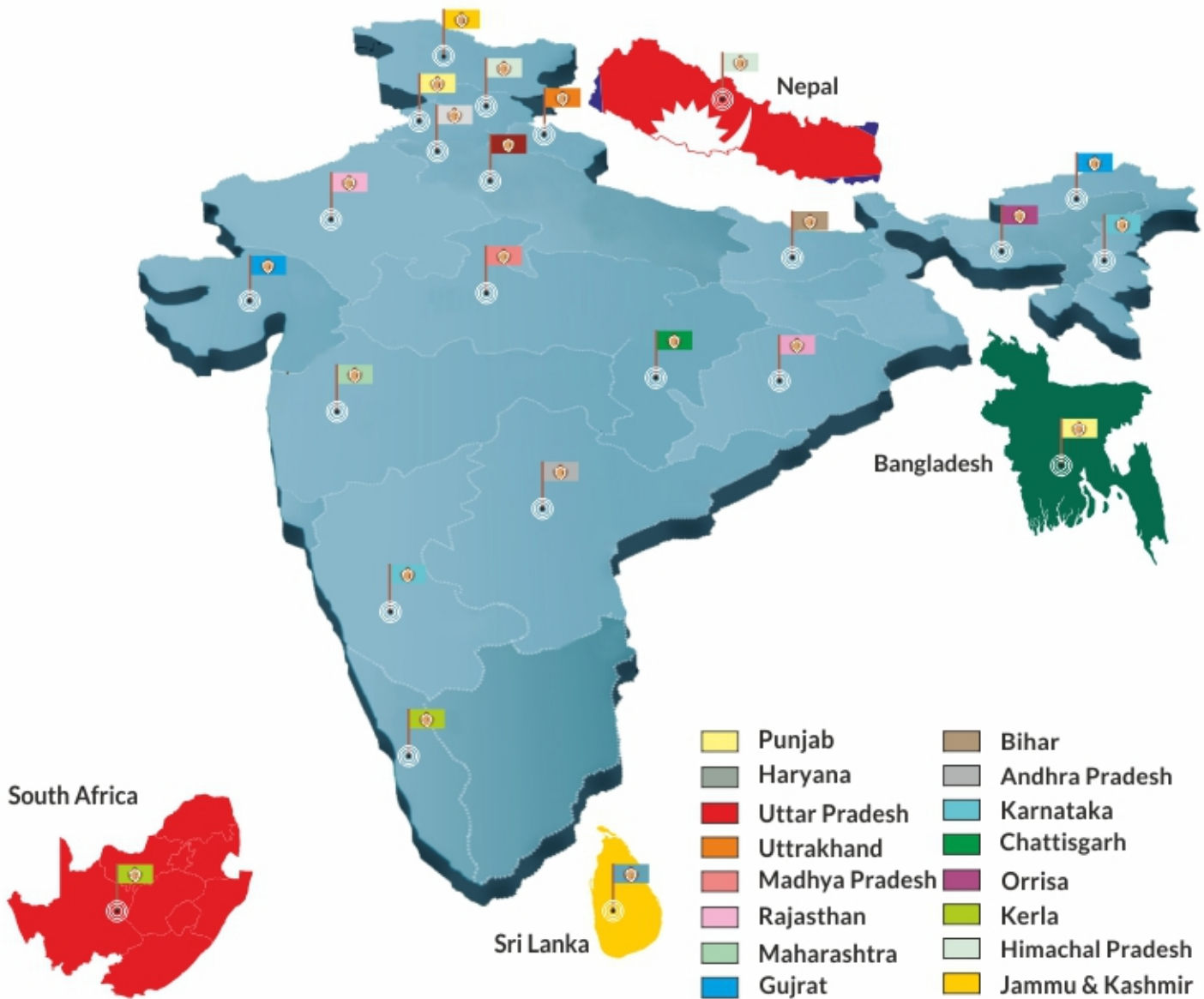


Shree
Girnar Metal Industries
AN ISO 9001 : 2015 Certified Company



Copper Fittings

Shree Girnar Metal Industries also act as one of the biggest exporter of all type of **Brass & Copper Fittings** in domestic as well as overseas market. Our products provide flawless performance which is cost effective as well as reliable. The company is observing & maintaining international standards of quality with regard to all aspects of manufacturing & packaging. In India we have more than 250 satisfied customers.





Shree Girnarmetal Industries

AN ISO 9001 : 2015 Certified Company

Address: Ludhiana Bye Pass, Opp. Reliance Infocom, Malerkotla-148023, Punjab, India
 Website: www.shreegirnarmetal.com | Email: shreegirnarmetal@gmail.com
 Mobile: +91-98140-07677, 99140-37677, 98555-67677, 94176-80202

